

Upgrading the Firmware

You can upgrade the firmware of any Paradox control panel or module by using the WinLoad In-Field Firmware Programmer. To upgrade the firmware you must first create a communication link between your PC and a security device. Then you can use WinLoad to transfer the upgrade information from your PC to that device.

There are two ways to upgrade: You can upgrade via serial connection by using either the CV4USB Converter or the 307USB Direct Connect Interface system accessories. Also, you can upgrade via four wire connection using the CV4USB Converter.

This document provides procedures for setting up a communication link and then shows you how to transfer upgrade information with WinLoad. This document has the following sections:

- Creating a serial connection
- Creating a four wire connection
- Transferring upgrade data with WinLoad

Creating a serial connection

To upgrade the firmware of a Paradox device via serial connection, you can transfer upgrade information from your PC using either the CV4USB Converter or the 307USB Direct Connect Interface. The following two procedures show you how to set up serial connections.

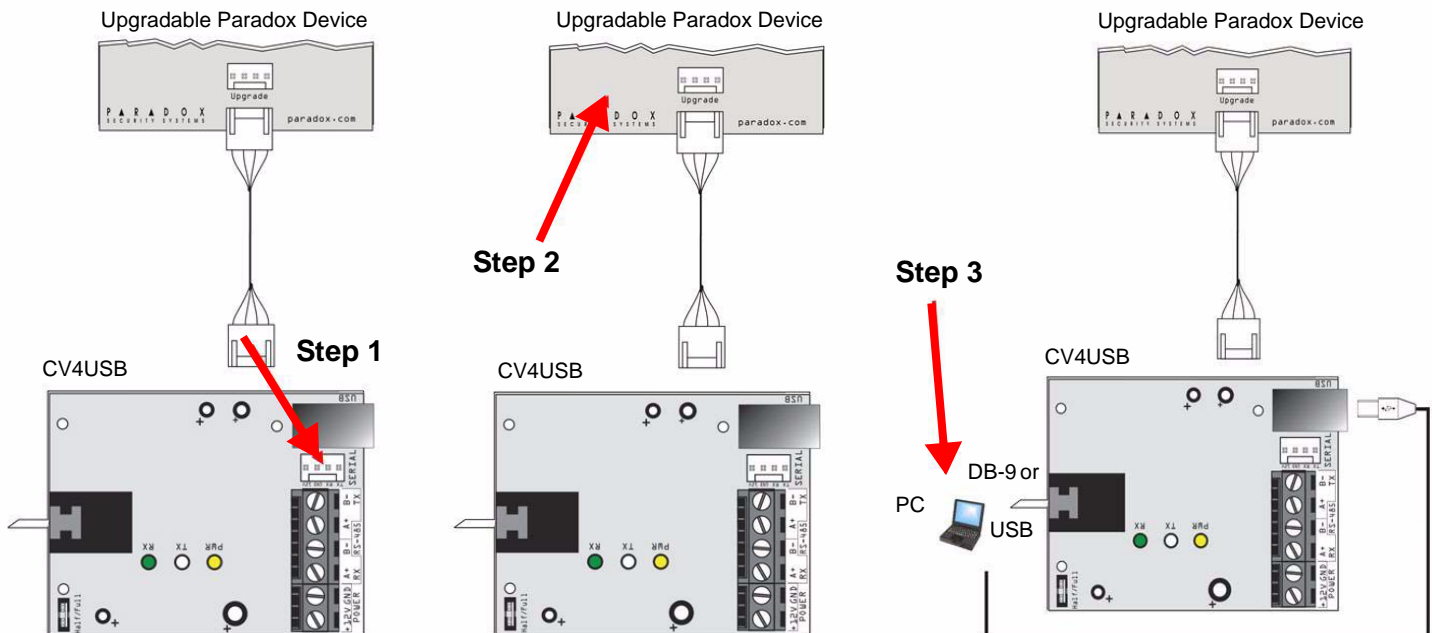
To avoid any complication, be sure to connect the converter to the security device before you connect the PC to the converter.

CV4USB Converter connection

Step 1: Connect the device that you want to upgrade to the serial port of the CV4USB.

Step 2: Power the device that you want to upgrade.

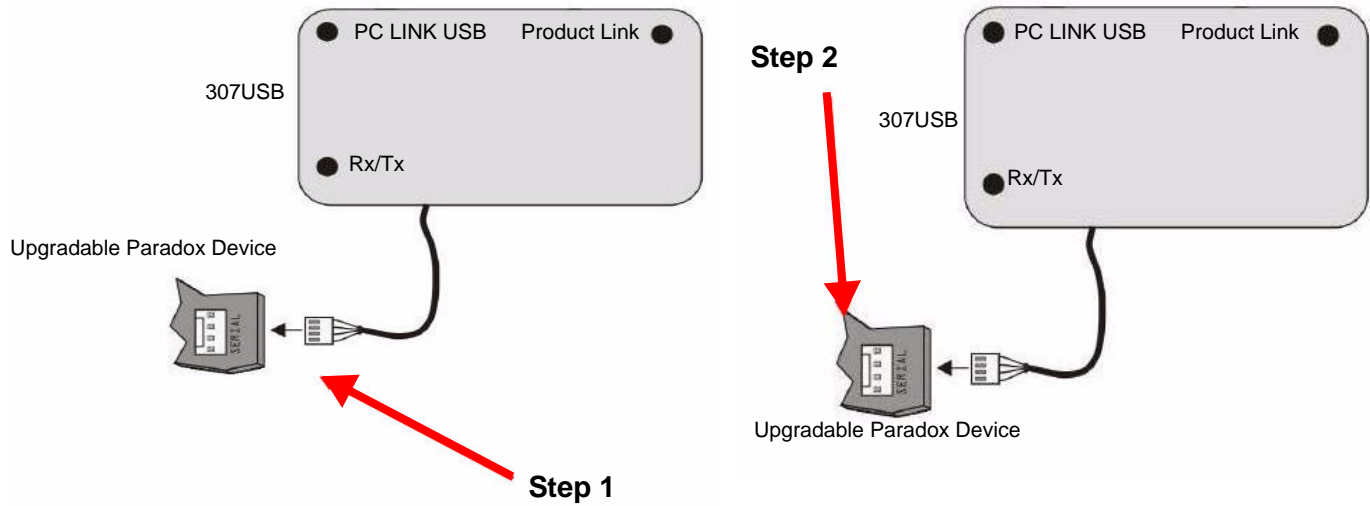
Step 3: Using either a DB-9 or a USB connection, connect the PC to the CV4USB.



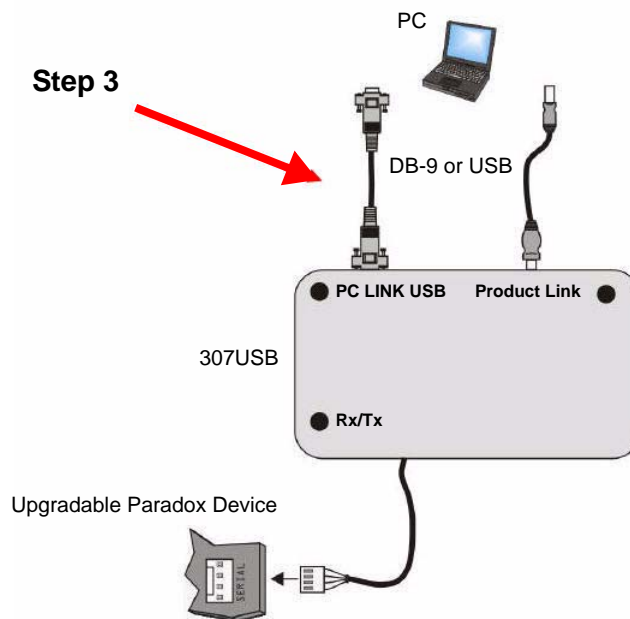
307USB Direct Connect Interface Connection


Step 1: Connect the 307USB Direct Connect Interface to the serial port of the device you want to upgrade.

Step 2: Power up the device that you want to upgrade.



Step 3: Using either a DB-9 or a USB connection, connect the PC to the 307USB.



 **K641 / K641R keypads that feature a four-pin serial connector can also be upgraded using the 307USB. To do this, you must first disconnect the keypad's GRN and YEL combus wires before following instructions.**

Creating a four-wire connection

You must use the CV4USB to upgrade the firmware of modules with a four-wire connection. The following modules use a four-wire connection:

K641: 32-Character Blue LCD Keypad Module

K641R: 32-Character Blue LCD Keypad Module with Integrated Card Reader


PRT3: Integration Module

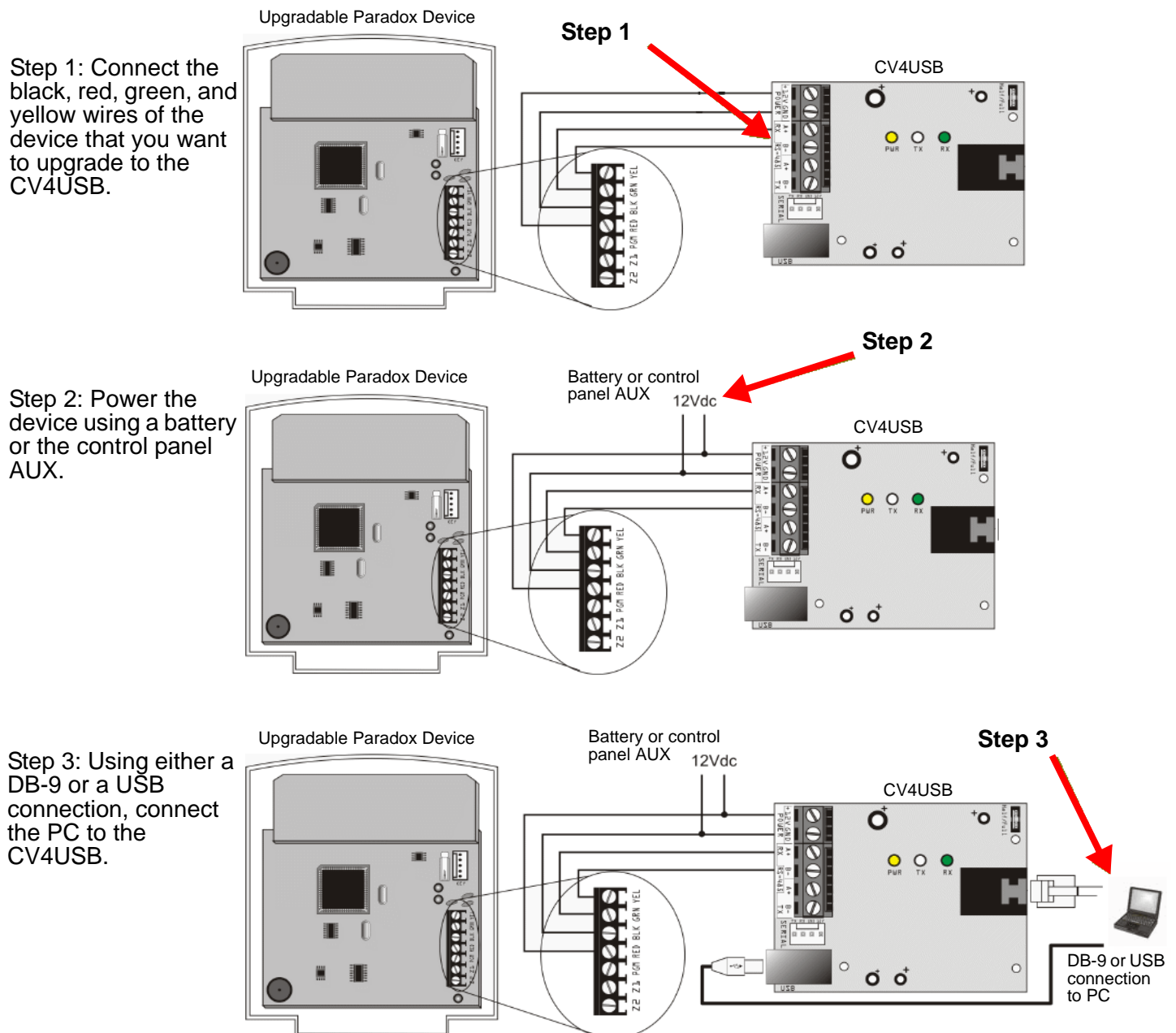
ACM12: 4-Wire Access Control Module

R910: 4-Wire Indoor/Outdoor Proximity Reader

R915: 4-Wire Sealed Indoor/Outdoor Proximity Reader and Keypad

CV4USB Converter Connection

 *K641 / K641R keypads that feature a four-pin serial connector can also be upgraded using the 307USB. To do this, first disconnect the keypad's GRN and YEL combus wires before following instructions.*



Transferring Upgrade Data with WinLoad

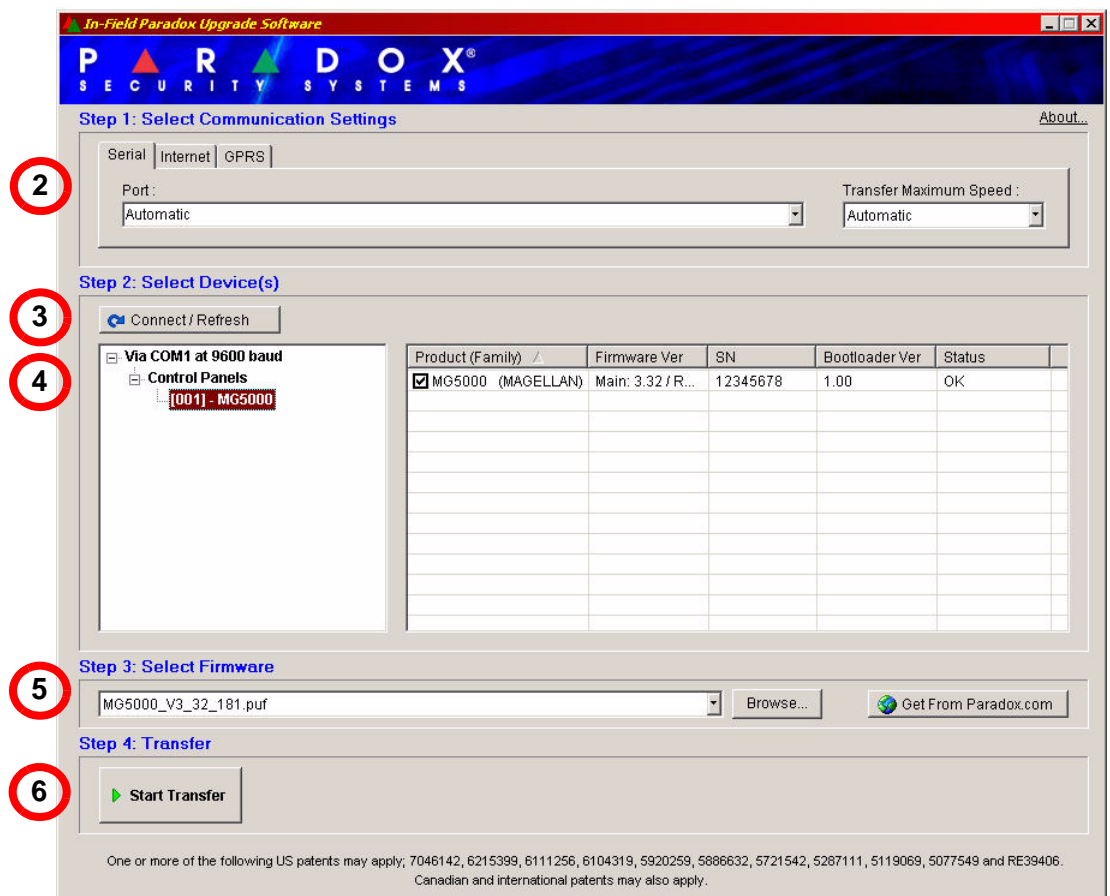
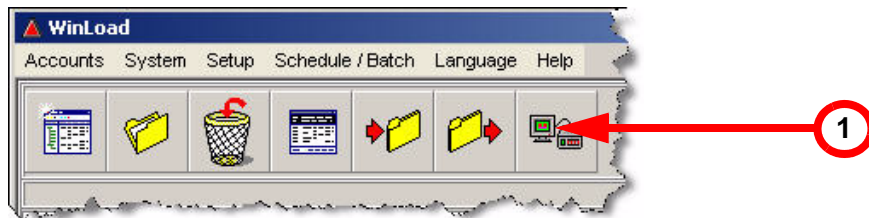
There are three ways to transfer upgrade data with WinLoad. This section provides the following procedures:

- Transferring data via serial connection
- Transferring data via internet connection
- Transferring data via GPRS connection


Transferring data via serial connection

Before you begin transferring data, be sure you have set up the CV4USB or 307USB connection from the upgradable Paradox device to your PC as shown in the diagrams in this document.

To transfer data via serial connection, refer to the steps which are highlighted in the following diagram:



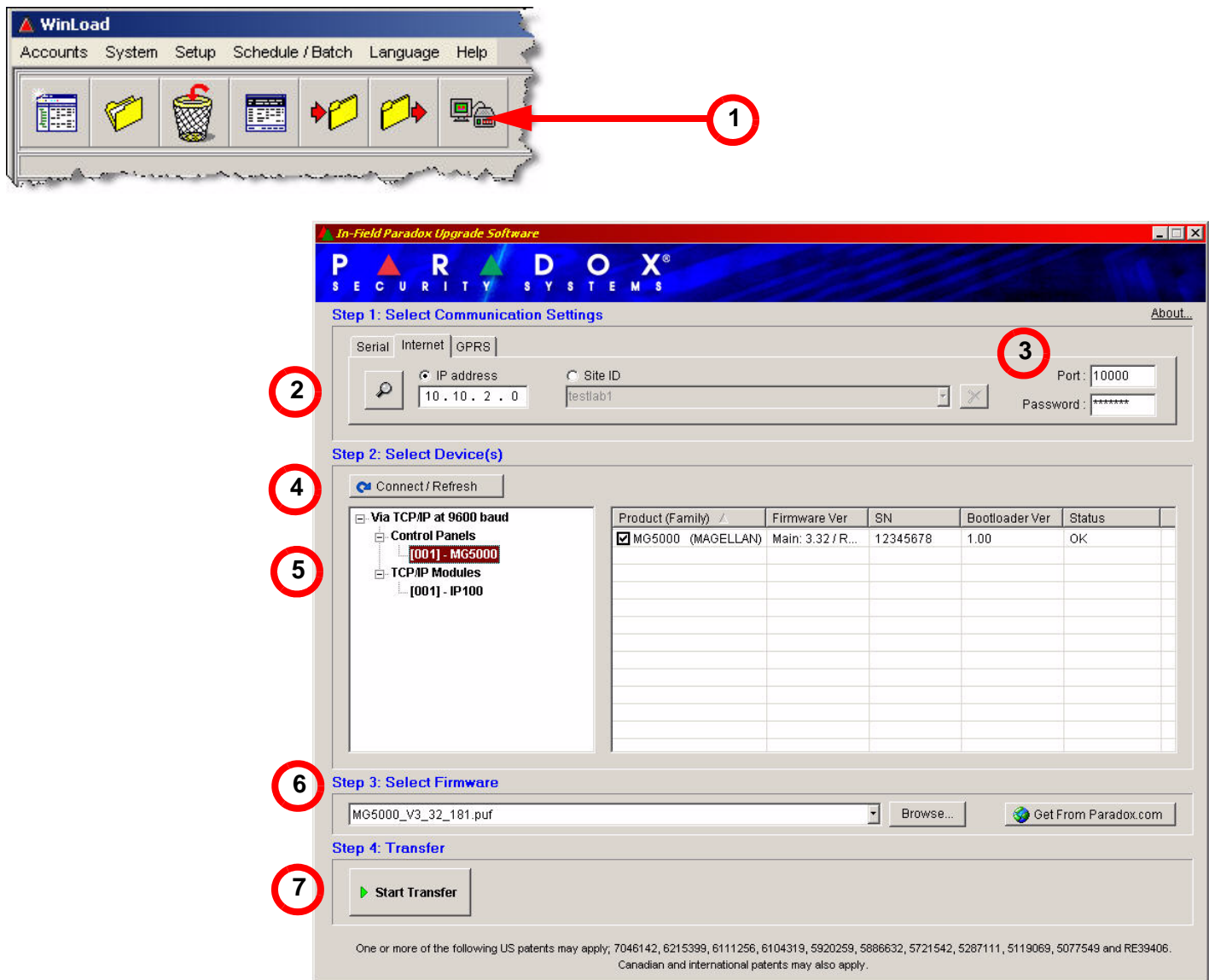
1. Start WinLoad and click the **In-Field Firmware Programmer** button.
2. Click the **Serial** tab. Then select the correct **COM Port** and **Transfer Speed**.
3. Click **Connect/Refresh**. If you are connected to a control panel, the Product Login window opens. Enter the Panel ID (EVO section [3011], MGSP section [910]). Enter the PC Password (EVO section [3012], MGSP section [911]).
4. Select the hardware you want to upgrade. The hardware information is displayed in the right pane.
5. From the drop-down menu, select the firmware you want to use. To download new firmware, click **Get From Paradox.com**.
6. Click **Start Transfer**.

 *If the upgrade process is not completed properly, either because Cancel was pressed or because of technical problems, the panel or module will not function until firmware is properly transferred.*


Transferring data via internet connection

Before you begin transferring data, be sure you have set up the IP module connection to the upgradable Paradox device. Refer to your IP module installation guide for connection details.

To transfer data via internet connection, refer to the steps which are highlighted in the following diagram:



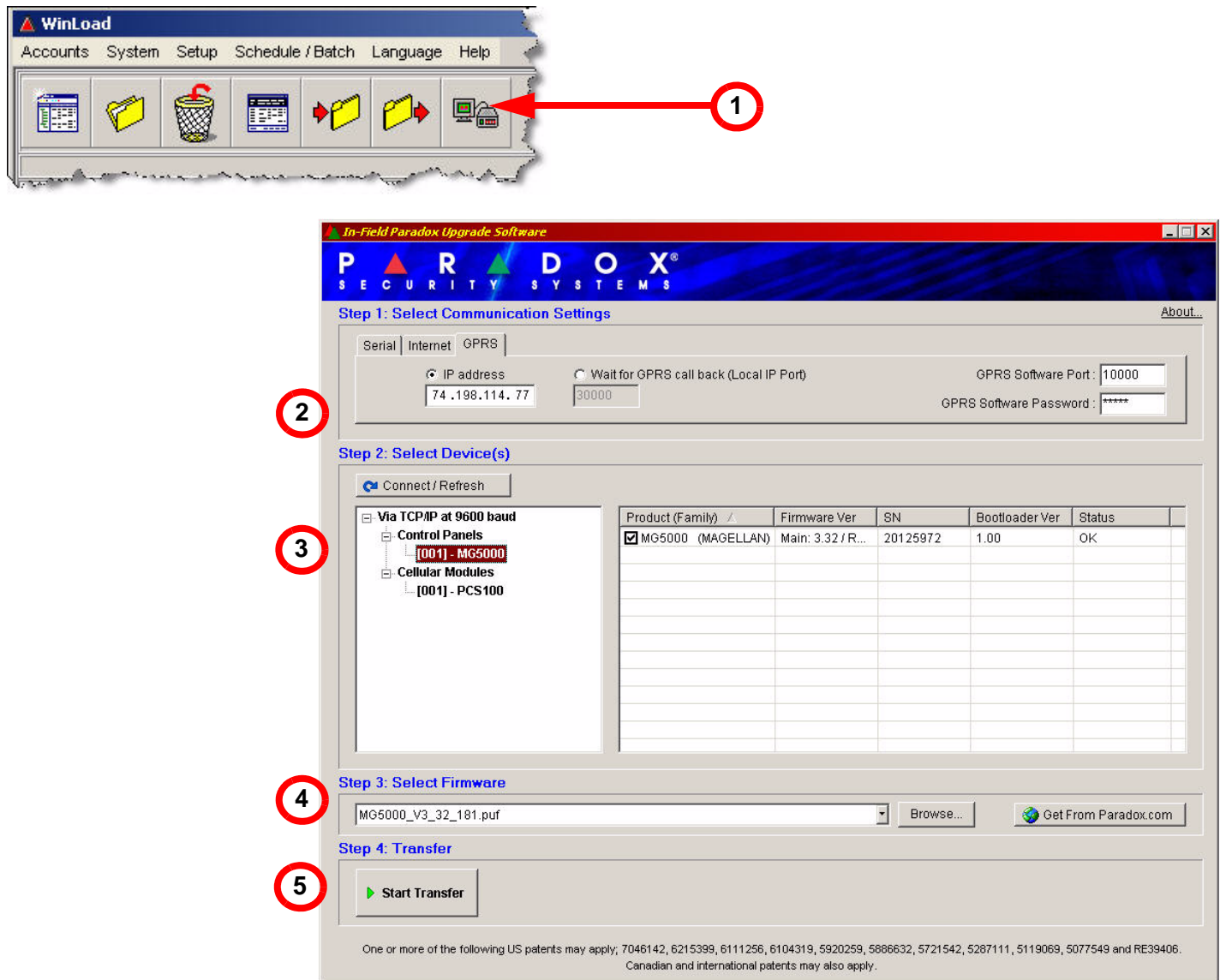
1. Start WinLoad and click the **In-Field Firmware Programmer** button.
2. Click the **Internet** tab. Then select **IP address** or **Site ID**. Enter either the IP address or the Site ID in the space provided. To locate an IP address on the LAN (if any), click the magnifying glass.
3. Enter port and password information if necessary.
4. Click **Connect/Refresh**. The Product Login window opens. Enter the Panel ID (EVO section [3011], MGSP section [910]). Enter the PC Password (EVO section [3012], MGSP section [911]).
5. Select the hardware you want to upgrade. The hardware information is displayed in the right pane.
6. Select the firmware you want to use. To download new firmware, click **Get From Paradox.com**.
7. Click **Start Transfer**.

 *If the upgrade process is not completed properly, either because Cancel was pressed or because of technical problems, the panel or module will not function until firmware is properly transferred.*

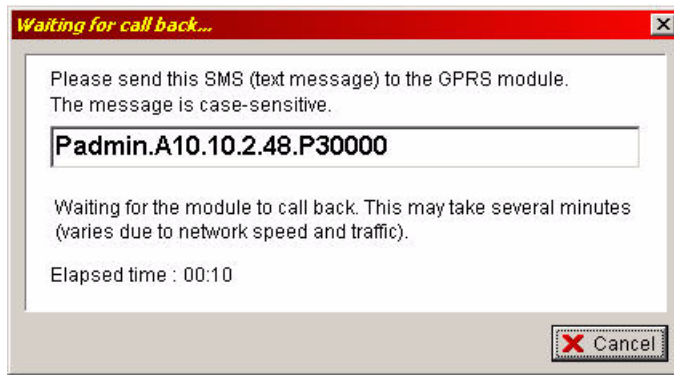
Transferring data via GPRS connection

Before you begin transferring data, be sure you have set up the GPRS module connection to the upgradable Paradox device. Refer to your GPRS module installation guide for connection details.

To transfer data via GPRS connection, refer to the steps which are highlighted in the following diagram:




1. Start WinLoad and click the **In-Field Firmware Programmer** button.
2. Click the **GPRS** tab. Then do one of the following:
 - If you have a static IP address for the GPRS module, select **IP address** and enter the IP address in the space provided. Enter port and password information. Then click **Connect/Refresh**. The Product Login window opens. Enter the Panel ID (EVO section [3011], MGSP section [910]). Enter the PC Password (EVO section [3012], MGSP section [911]). Proceed to step 3.
 - If you have a dynamic IP address for the GPRS module, select **Wait for GPRS callback**. Enter local IP port and password information. Click **Connect/Refresh**. A window appears displaying a string you must text message to the GPRS module.



Once the text message is sent and communication is established, the Product Login window opens. Enter the Panel ID (EVO section [3011], MGSP section [910]). Enter the PC Password (EVO section [3012], MGSP section [911]).

3. Select the hardware you want to upgrade. The hardware information is displayed in the right pane.
4. Select the firmware you want to use. To download new firmware, click **Get From Paradox.com**.
5. Click **Start Transfer**.

 *If the upgrade process is not completed properly, either because Cancel was pressed or because of technical problems, the panel or module will not function until firmware is properly transferred.*

Warranty

For complete warranty information on this product please refer to the Limited Warranty Statement found on the website www.paradox.com/terms. Your use of the Paradox product signifies your acceptance of all warranty terms and conditions.

© 2008 Paradox Security Systems Ltd. All rights reserved. Specifications may change without prior notice. One or more of the following US patents may apply: 7046142, 6215399, 6111256, 6104319, 5920259, 5886632, 5721542, 5287111, 5119069, 5077549 and RE39406 and other pending patents may apply. Canadian and international patents may also apply.

Paradox Imperial and BabyWare are trademarks or registered trademarks of Paradox Security Systems Ltd. or its affiliates in Canada, the United States and/or other countries. For the latest information on products approvals, such as UL and CE, please visit www.paradox.com.

P  **R**  **D O X**[®]
S E C U R I T Y S Y S T E M S
Printed in Canada 10/2008 PARADOX.COM UDS2000-EA04