

P ▲ R ▲ D O X™

STAY D™

The Secure Way of Living



StayD simplifies your life and makes it safer by protecting you 24 hours a day, 7 days a week without ever having to disarm the system – even when entering an armed area. StayD lives with you and protects you at all times, without any unprotected periods, and while automatically rearming the system so you don't need to remember.

This unique feature seamlessly integrates security into your everyday life to give you safe, simple living with peace of mind.

StayD is available in the MG5000/MG5050, as well as the Spectra SP.



P A R A D O X . C O M



StayD represents a new concept for living with a security system. Unlike any security system before, the unique StayD feature seamlessly integrates security into your everyday life to give you safe, simple living with peace of mind.

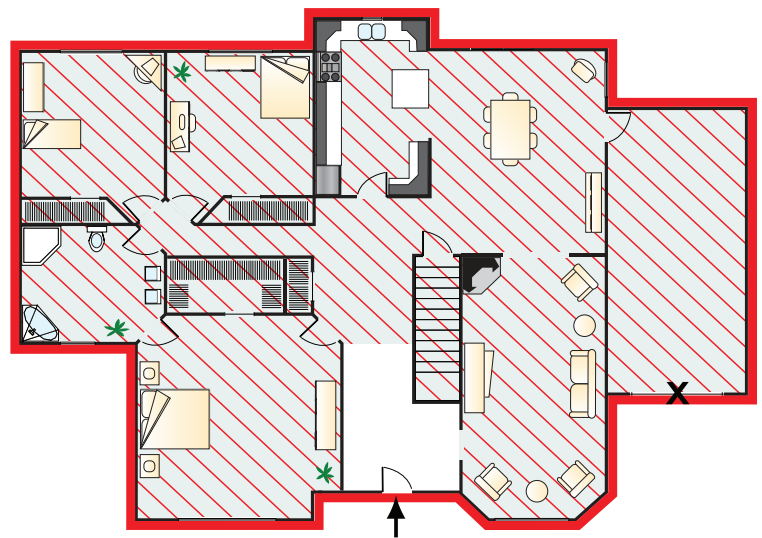
The StayD mode, offered in the MG and SP series of panels from Paradox Security Systems, is the only safe security system that's always secured. StayD living simplifies your life and makes it safer by protecting you 24 hours a day, without ever need to disarm the system, without any unprotected periods, and automatically re-arming closed zones so you don't have to remember to do it.

Entry/Exit Path

StayD features programmable entry/exit paths. Users enter and exit the property through pre-defined points with only specific zones open for passage. Each entry point leading to a keypad on the site is programmed into the keypad's path, which consists of up to 4 zones. When entering or exiting a site, only the path (zones) assigned to the keypad will start a delay; all other zones remain armed.

Entering the Site:

Entering the site in StayD mode through one of the entry point zones (door) will start an entry delay for that door only (all other entry doors remain armed). A code must be entered to end the entry delay. When the opened door is closed, the zone automatically rearms. If multiple zones are assigned to the keypad as entry/exit points, the code will end the entry delay for all assigned zones and confirm that it is a valid entry. Opened zones generating an entry delay are displayed on the keypads. Other zones will not be displayed until the entry delay is cleared.



- ↑ = Entering the site
- X = All other entry points remain armed
- = Armed

To Enter the Site:

1. Enter site through entry point door.
2. Starts an entry delay for that door only.
3. Enter **[CODE]** to end the entry automatically rearm in **Stay Arm**.

Enter the premises while automatically re-arming the perimeter (stay arm).

Leaving the Site

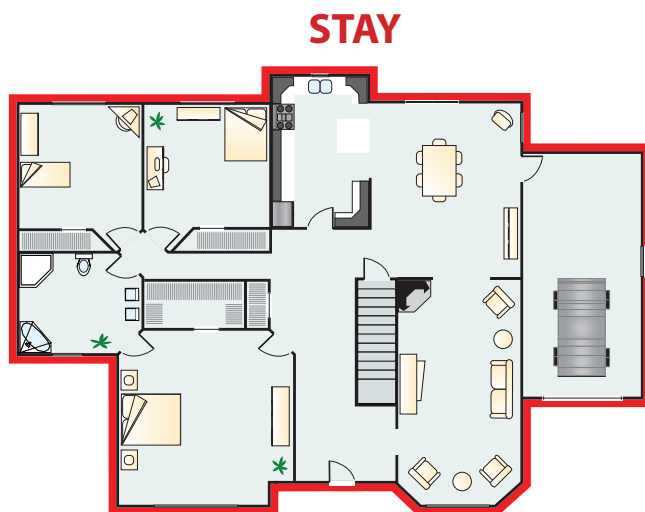
Leaving the house while keeping the inside secured in StayD is done by pressing the Arm key on the keypad that the exit door is assigned to (by programming). This will start an exit delay period for this door only. After all exit doors assigned to the keypad are closed, the zones will rearm instantly. Up to 4 zones can be assigned to each keypad for scenarios where there is a need to trigger multiple zones to exit the property (e.g. a door to the garage, the garage rolling door, crossing an outdoor detector and a gate to leave the property). If you try to exit from a keypad that does not have any zones assigned as entry/exit points, you will hear a rejection beep and the request will be denied.

To Leave the Site:

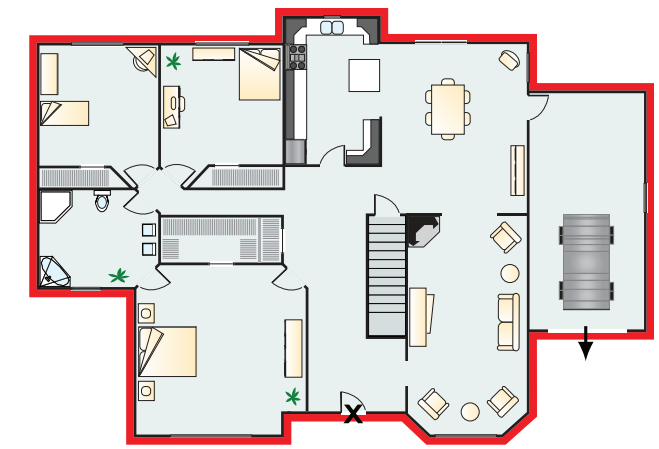
1. Press and hold **[ARM]**.
2. Starts exit delay for this door only.
3. After exit delay, system automatically rearms in **Full Arm**.

Inside the Site

Changing from Stay to Sleep and back requires no code entry and is done by pressing the appropriate button on the keypad. A code will be required only if an entry delay has started due to the opening of a secured zone. When switching from Stay to Sleep, the currently armed zones remain armed and only the Sleep zones will start a delay allowing you enough time to safely approach the bedroom (the "sleep" area) before arming the rest of the house. The system instantly changes from Sleep to Stay, allowing you to safely approach the kitchen or bathroom at night or when needed.



Remain on site and move freely within the secured perimeter (e.g. doors and windows)

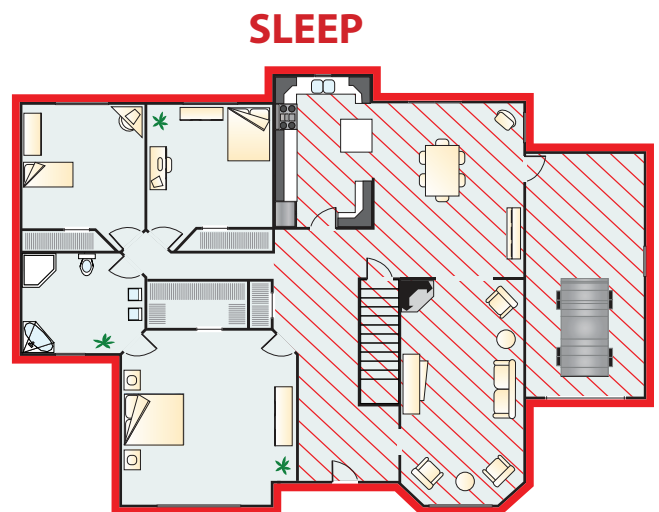


↑ = Exiting the site

X = All other exit points remain armed

■ = Armed

Leave the premises while automatically securing the entire property (full arm).



Remain in a more highly secured area (e.g. bedroom) while the rest of the site is fully secured.

To Switch to Sleep Mode:



1. Press and hold **[SLEEP]**.
2. After delay, system automatically rearms in **Sleep Arm**.

To Switch to Stay Mode:

1. Press and hold **[STAY]**.
2. System automatically rearms in **Stay Arm**.

Turning On or Off the StayD Mode

To activate StayD mode, press the Stay key followed by a valid code and then press the Stay key again. The StayD LED will light up to confirm. In rare situations where StayD needs to be deactivated, such as when having a party, press the Off key followed by a valid code and then press the Off key again. The StayD LED will turn off, and the Off LED will light up. The StayD mode on or off state is common to both partitions. When in off mode, the system will act as a common alarm system that is disarmed on entry delay and bypasses all entry zones when exiting.

StayD On:  + [CODE] +  ➡ StayD Light On


StayD Off:  + [CODE] +  ➡ Off Light On

Programming the StayD Mode (Installers)

StayD mode is easy to program and adds very minimal programming to the system in comparison to a common system. Simply activate the option, assign entry/exit doors to the proper keypads (including wireless keypads) to allow safe exit and that's it!

Temporarily Bypass a Zone (e.g. window)

While living with StayD, opening a window or door temporarily without triggering an alarm is easy. Press [OFF] + [ACCESS CODE] and the system will start an exit delay allowing you to open one zone. The exit delay will end after opening the desired zone. When you close the open zone, that zone will re-arm.

 + [CODE] ➡ open desired zone to bypass

Issues with systems without StayD mode

Anybody that owned an alarm system before knows that the main problem with all systems is that they do not have the StayD feature:

- Common alarm systems need to be disarmed and armed upon entry, which makes it annoying and causes most people to "forget" to rearm. This is one of the reasons why most alarm systems are turned off most of the time.
- For those who do use the stay arm feature offered in most systems, and remember to arm this mode after every entry/exit, the main problem is that when entering or exiting while supposedly protected by the stay arming, all entry/exit zones will be bypassed for the entry and exit delay periods – making it easy for somebody to enter the house. Therefore it is not a solution for REAL security due to the number of unsecured and unprotected periods.

Overview

This patent-pending feature is available with the MG and SP series control panel:

- Always armed in one of the modes without any disarmed periods.
- Automatically switches between different arming levels.
- Each keypad has its own designated entry/exit path (up to 4 zones).
- Only entry/exit path zones are bypassed and rearmed upon closing.
- Never forget to arm or re-arm your system.
- Exit your home safely while keeping everyone inside secured at all times.
- Monitor your kids so they do not leave the house without supervision.
- Easily bypass zones temporarily.